



TECHNICAL DATA SHEET



Description:

SURFACE-GYP™ is a concentrated gypsum-based underlayment for optimum leveling of uneven finished, or areas with imperfections. **SURFACE-GYP™** offers a premium formulation with high performance additives, when mixed with water and special sand, produces a self-leveling and shrinkage-free product for thicknesses from 3/8" @3" (10@75 mm)

SURFACE-GYP™ is pumpable and fast-setting which allows light foot traffic shortly after application. It significantly improves the fire resistance and sound proofing of the assemblies.

SURFACE-GYP™ can be used as an underlayment over any type of subfloor and with most types of flooring finishes such as: carpet, vinyl sheets, wood flooring, laminated, ceramic tiles, LVT, etc. It is an ideal product for multi-family hotels/motels, residential, offices & light commercial projects.

Key features:

- Easy to apply with excellent fluidity
- Good fire resistance properties
- Supports light transit for 4 to 6 hours after its application (depending on the thickness)
- Provides good sound control when use with correct Adhesives friendly
- Good resistance to compression
- Adhesives friendly

Uses:

- Correcting uneven subfloors of concrete, oriented strand board, wood, slabs, natural stone, terrazzo, ceramic tile, etc.
- Can be applied in bonded, unbonded and floated systems

Color:

Light gray

Packaging:

80 lbs (36.3 kg) bag of powder

Technical references:

(Laboratory test at 23°C - 73°F)

Physical appearance	Light gray powder
Theoretical yield (1.9 cu ft of sand)	41 ft² @3/4"
Ready for light transit @3/4"	4 to 6 hours*
Dry density (aggregated)	≈ 108 - 110 lbs/ft³
Compressive Strength 28 days (ASTM C472)	2500 to 3500 psi
Ford cup No.5 reference time (fluidity)	1 minute
Fire performance (ASTM 84)	Class A / Class 1 Fire spread: 0

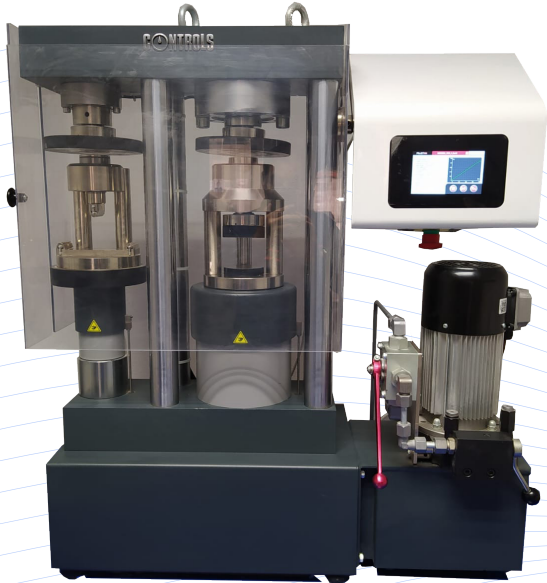


*Moisture of surface should be verified with a measuring equipment, drying times may vary.

SURFACE-GYP™ has zero **VOC (Volatile Organic Compounds)** no smell or compounds irritating or harmful to people.

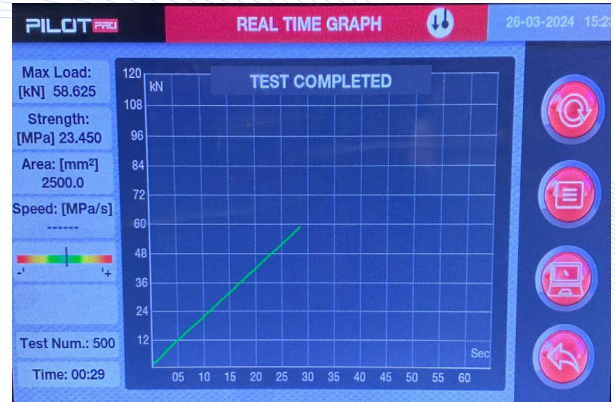
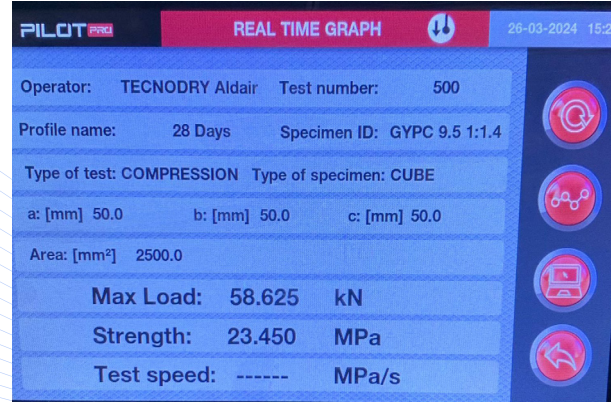
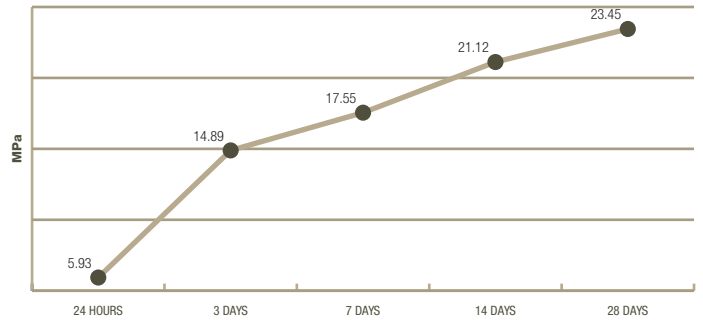
Lab Tests

Tests conducted in our lab with the latest generation compression/flexural press **CONTROLS PILOT PRO AUTOMATIC**



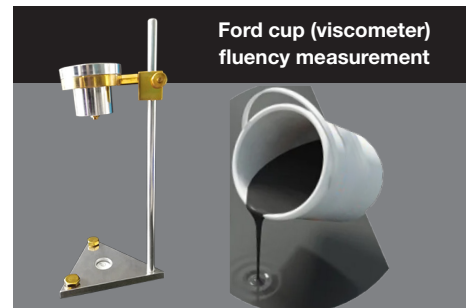
CONTROLS
PILOT PRO

Compressive strength SURFACE-GYP



*These screenshots correspond to internal tests carried out in our laboratory (1 MPa = 145 psi)

Measuring devices from our laboratory



Substrate preparation

The slab or mezzanine must be at least 28 days old or have reached its full resistance and must be free of moisture (it is recommended to carry out a moisture test with calibrated equipment and by qualified technical personnel)

SURFACE-GYP™ must be applied on clean, dry and resistant subfloor.

In all cases, primary sealer must be applied to the existing subfloor, and the application of the sealer must meet the directions of its technical data sheet

Mixing and application:

1. To achieve the expected results, it is necessary to mix the products correctly, electric mixers or special pumping equipment are therefore recommended
2. Mix the contents of the bags homogeneously with special sand and clean/fresh water
3. Once the adequate fluidity has been reached, the self-leveling mixture should be poured immediately in uniform sections by determined areas according to the expected yield and according to the calculated thickness

Distribute the mixture with a squeegee or special smoother to control the desired thickness; if necessary, pass a roller in either direction on the self-leveling lining in order to eliminate the bubbles in the mix

If there are control joints or constructive joints, these must be respected; avoid covering them with **SURFACE-GYP™** or make a cut to it after drying

Very important: After application, the product must not be exposed to air currents and direct sunlight during the first 24h

Shelf life and storage:

Up to 6 months if sealed in its original packaging and stored in a cool and dry place, protected from sunlight and moisture

Special care:

This product does not contain polluting or toxic additives and does not contain organic components that degrade. The use of protective equipment such as safety glasses, dust mask and latex gloves is recommended

Keep out of the reach of children

Limitation and precautions:

- Do not use as overlay
- Do not use in exterior applications
- Must be installed after the drywalls are set
- Ensure building is airtight (after roof, doors and windows)
- Installation temperature must be at least 50°F
- Do not clean subfloor with oil or silicone based product prior to **SURFACE-GYP™** application
- Avoid walking on the product before product has set
- We highly recommend conducting a moisture test on the underlayment before floor covering installation

Limited warranty:

TECNODRY LLC extends the warranty of quality of our products, based on the use of raw materials of the highest quality, ensuring its quality and behavior according to our specifications. **TECNODRY LLC** is not responsible for failures that arise from errors in preparation, installation, finishing or failure of the surface on which it is applied. The information contained in this document has been provided in good faith based on the current knowledge and experience of **TECNODRY LLC**. The information is valid exclusively for applications and uses to which reference is made. The information expressed herein does not exonerate the user from testing products and performances for the desired application and purpose

Our most up-to-date technical data sheets are the ones that can always be found on our web pages:

www.self-leveling.us www.nivelantes.com



Revision: 25/Apr/24 08:11 PM